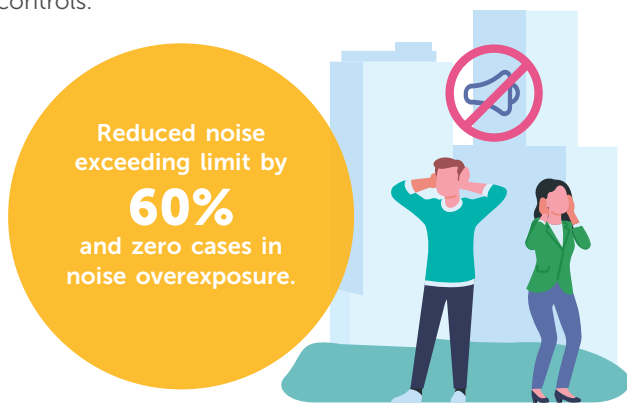


## Positive Social Impact

- **Zero** cases of over exposure to chemicals in 2022.
- Achieved **95 per cent** compliance to chemical management in 2022.

### Noise Reduction Programme

We implemented a groupwide Noise Reduction Programme focusing on reducing noise at source and strengthening overall Health Risk Management. This was done through Noise Engineering Control studies targeting identified high noise-emitting equipment and enhanced controls.



### Digitalising the Health Risk Assessment (HRA)

Health Risk Assessment (HRA) was digitalised and integrated into HSSE Integrated Risks Assessment (HIRA). We implemented the enhanced HRA methodology, focusing on operationalisation and integration into other Safe System of Work (SSOW). The enhanced methodology includes a newly-developed psychosocial risk assessment (PsyRA), improving how workplace psychosocial risk factors are being identified and assessed.

- Operationalisation of HRA output within other Safe System of Work, and overall company health risk profile.

### Advanced Ergonomics Risk Assessment (ERA)

We fortified the Ergonomics Risk Management by implementing the Advanced Ergonomics Risk Assessment (ERA) Tool, which is known as Humantech and Ergonomics Control Inventory.

- Reduced ergonomic risk from **60 per cent** in 2021 to **20 per cent** in 2022 and achieved time saving for **50** tasks in 12 locations through Advanced ERA.

### Improved Risk Management Related to Industrial Hygiene

We continue to conduct First Line Assurance for Business Units, OPU's and our assets, which looks into managing risks related to Industrial Hygiene that are linked to day-to-day operational activities. We achieved increase in overall compliance as follows:

Programme (%)	2021	2022
<b>Chemical Management</b>	<b>95</b>	<b>95</b>
SDS Availability	91	94
Chemical Labelling	90	95
<b>Hearing Conservation</b>	<b>93</b>	<b>97</b>
Hearing Protection Zone Sign	98	99
Personal Hearing Protector (PHP) Issuance Record	94	95
<b>Radiation Protection</b>	<b>99</b>	<b>99</b>
Calibration of Measuring Equipment	91	93
Availability of Measuring Equipment	91	95
Annual Equipment Maintenance	91	96

### Safety Management

We strengthened site supervision and compliance to SSOW to address key issues and reduce incidents.

- Seven Second Line Assurances and **17** unannounced visits were conducted at selected sites to strengthen site compliance of HSE requirements.
- As an effort to better understand the human performance aspects that contributes to incidents, PETRONAS has introduced the Categorisation of Incident Causes (CIC) that further defines categories of Human Factor for every incident investigation.
- This led to improved site discipline and interventions:
  - Experienced a **55 per cent** increase in Stop Work Authority (SWA) from the previous year.
  - Reported a **20 per cent** increase in Unsafe Act Unsafe Conditions (UAUC) from the previous year.