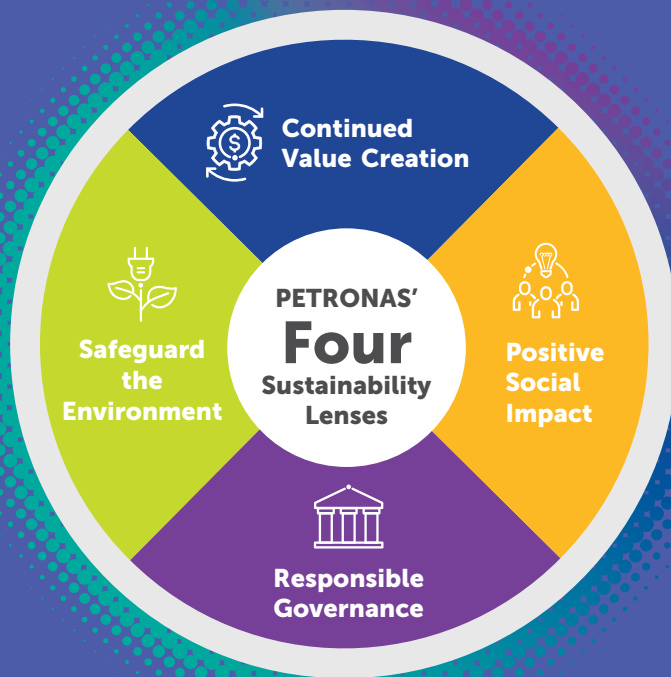


# Our Approach to Sustainability

Our actions are framed by our four Sustainability Lenses

We use a non-financial materiality assessment to inform our sustainability priorities and disclosures that identify topics that are most important to our stakeholders and have the most impact on our business



## Continued Value Creation

Drive long-term business value creation through responsible investments.

## Safeguard the Environment

Collaboratively reduce environmental impact by transitioning to lower carbon energy solutions and deploying innovative operations and technologies.

## Positive Social Impact

Create positive alliances with the communities in which we operate by protecting and adding value to the well-being of employees, partners and society.

## Responsible Governance

Safeguard the organisation's commitment through strong governance mechanisms and ethical business practices.

## Material Topics

### Safeguard the Environment

- GHG Emissions
- Climate Change Risks
- Environmental Management
- Nature and Biodiversity

### Positive Social Impact

- Safety Management
- Human Rights
- Employee Attraction, Retention and Development
- Health and Well-being

### Responsible Governance

- Corporate Governance
- Anti-Bribery and Corruption

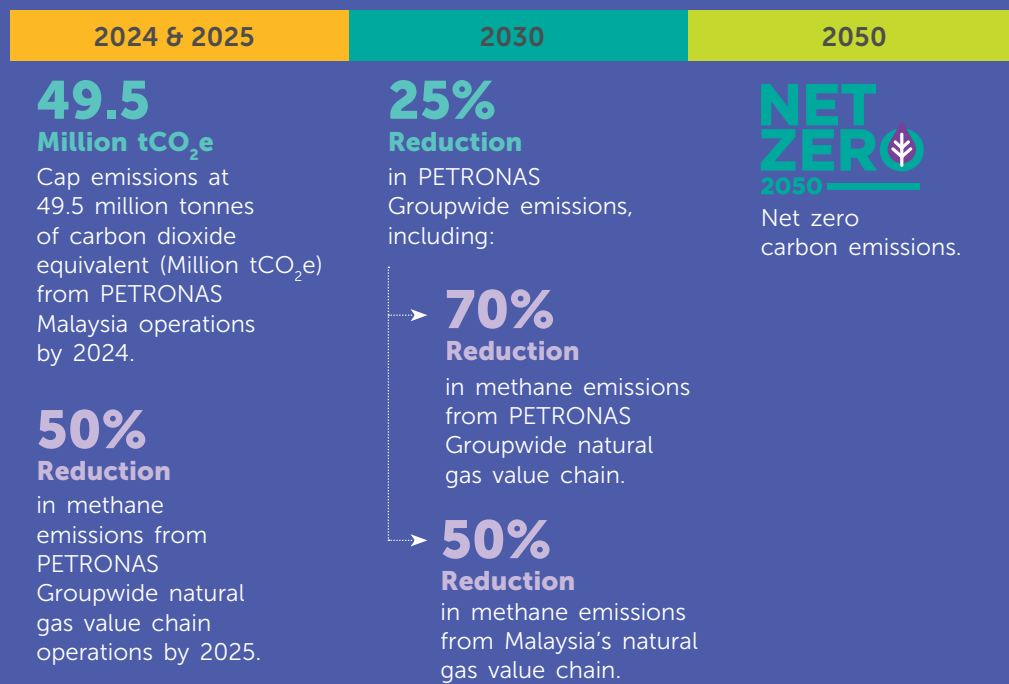
### Continued Value Creation

- Lower Carbon and Energy Transition Business
- Economic Contribution
- Sustainable Supply Chain
- Innovation and Technology
- Circular Economy

## In 2022, we declared our Net Zero Carbon Emissions by 2050 (NZCE 2050) Pathway

Our activities aim to contribute towards the United Nations' Sustainable Development Goals (SDGs)

### Our Greenhouse Gas Emissions Reduction Targets (Scope 1 and Scope 2)\*



We have prioritised seven of the 17 United Nations' SDGs that we believe we can contribute most effectively towards as part of our sustainability efforts.

### Renewables and Clean Energy Ambitions by 2030



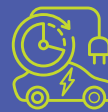
Leading next generation utility-scale renewable energy developer

**30 - 40 Gigawatts**



Large-scale hydrogen producer and go-to industry partner

**Up to 1,200,000**  
tonnes per annum of hydrogen



Preferred green mobility solutions provider

**10% market share**  
(circa 25,000 charging points) across key markets in Asia Pacific

\* Scope 1 covers direct emissions from our owned and controlled resources. Scope 2 covers indirect emissions from the generation of energy we buy.

- We have set 2019 as the base year for Scope 1 and Scope 2 emissions reduction.
- We recognise the importance of Scope 3 emissions, which refers to the emissions from our value chains not included in Scope 2. We are taking a progressive approach to measure, report and understand our impact prior to establishing our position and strategy.