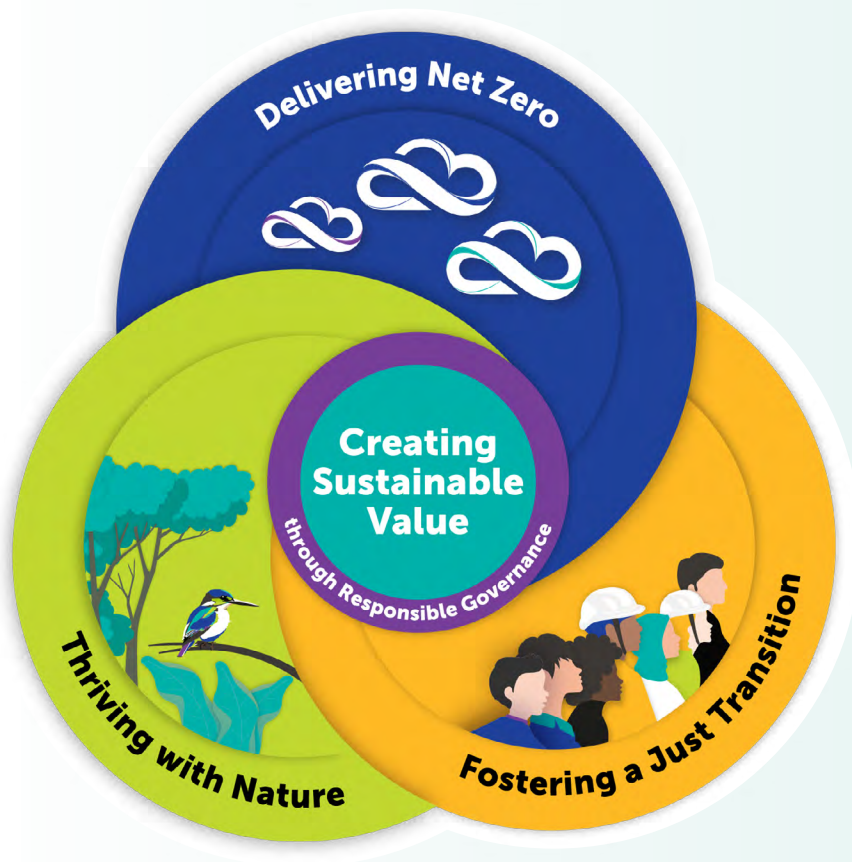


Our Approach to Sustainability

Our approach to sustainability supports PETRONAS' role as a progressive energy and solutions partner by integrating sustainability as a value driver across our Core Business and New Business activities, guided by the PETRONAS Energy Transition Strategy. This approach shapes how we contribute responsibly to the energy transition by managing sustainability-related risks, capturing transition opportunities and strengthening portfolio resilience. It integrates climate, nature, social and governance considerations into how we plan, operate and invest across our business model, decision-making processes and value chain.

Our sustainability priorities are anchored in our business activities and strategic focus areas, enabling us to clearly articulate our impacts and progress to stakeholders.

Sustainability Approach



● **Creating Sustainable Value through Responsible Governance**

● **Delivering Net Zero**

● **Thriving with Nature**

● **Fostering a Just Transition**

Sustainability Governance

The Board has ultimate responsibility for overseeing sustainability, including climate-related risks and opportunities at PETRONAS. Sustainability governance is supported by structured reporting channels from business units and functions to management committees, including the Sustainability Executive Leadership Team, and onwards to the Board. Controls, data governance and assurance processes further support the integrity of sustainability disclosures and alignment with enterprise risk management.

[Refer to the Corporate Governance section on pages 185 to 205 for details on the role of the Board.](#)



Scan the QR code or refer to the PETRONAS website for an overview of PETRONAS' Sustainability Governance Structure.

Material Topics

Aligned with United Nations Sustainable Development Goals (UN SDGs)

Guided by our purpose to be a progressive energy and solutions partner, we believe that creating sustainable value and practising responsible governance are essential to organisational resilience. This approach supports our Energy Transition Strategy and our ambitions to achieve net zero carbon emissions by 2050, thrive with nature and foster a just transition.

- CDP** Cyber Security and Data Protection
- CG** Corporate Governance
- EC** Economic Contribution
- EI** Ethics and Integrity
- HS** Health and Safety
- IT** Innovation and Technology



The evolving energy landscape requires urgent action to respond to the expanding challenge of climate change. To deliver our Net Zero Carbon Emissions by 2050 Pathway, we aim to reduce emissions across our core operations, invest in lower-carbon business growth opportunities, and deepen our understanding of how climate change may affect the resilience of our assets and value chains, so that we remain adaptive and future-ready.

- CGE** Climate Change and GHG Emissions
- LCT** Lower-Carbon and Energy Transition Business



Nature and biodiversity are essential for sustaining life on Earth. We recognise both our impacts on nature and our dependence on healthy ecosystems. We are committed to using natural resources responsibly, promoting circular practices and where possible, addressing nature and biodiversity loss. We engage in activities to restore, protect and conserve ecosystems in Malaysia and the countries where we operate.

- CER** Circular Economy and Resource Use
- EM** Environmental Management
- NB** Nature and Biodiversity



The energy transition will vary from country to country. We recognise the importance of an inclusive transition that supports societal progress. We are committed to advancing a transition that upholds human rights, and to supporting our employees, suppliers, partners and communities to access equitable opportunities for socio-economic growth.

- HC** Human Capital
- HR** Human Rights
- SC** Sustainable Supply Chain

