

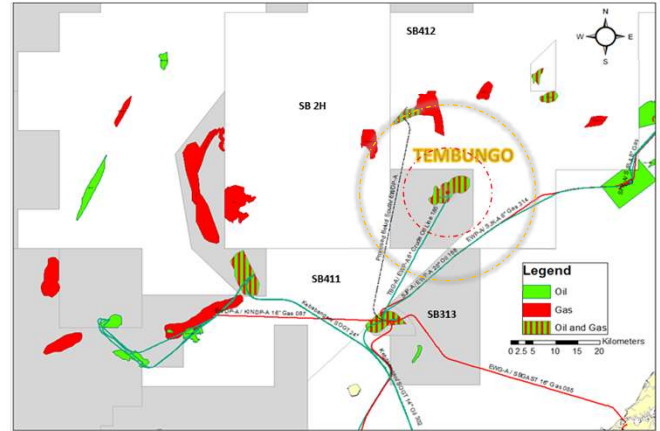


Sabah: Tembungo

FIELDS NAME:	Tembungo
LOCATION	75km of Kota Kinabalu Sabah & 35 km NE of Erb West Field
WATER DEPTH	Average 85m
WELLS	27 wells with total 33 strings (12 active string)
FACILITIES	TMBG-A and TMBG-B

FIELD & GEOLOGICAL OVERVIEW

Discovery	1971
Exploration Wells	Tembungo 1, 2, 3, 4 and 5
First Oil	Sept, 1974
Reservoirs	Upper, Middle and Lower
Depositional Environment	Deep water turbidite fan and channel environment.
Trap	Stratigraphic and Structural Trap <ul style="list-style-type: none"> Characterized by normal faults with NNW-SSE orientation which divided the structure into several hydrocarbon compartments.



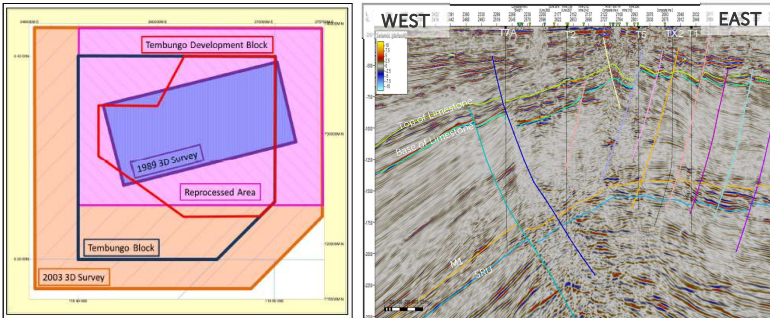
FIELDS LOCATION

SURFACE FACILITIES

TMBG-A

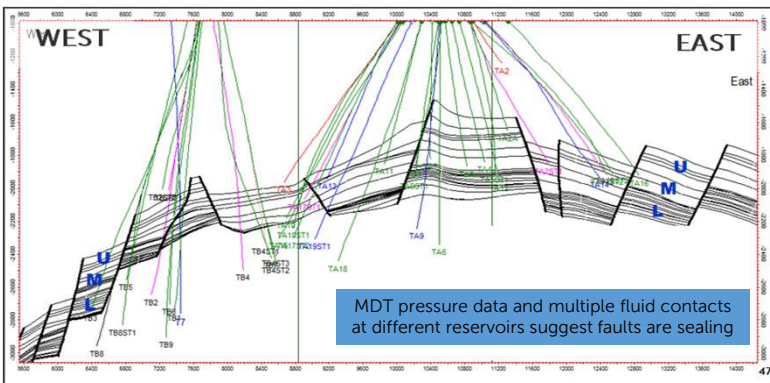
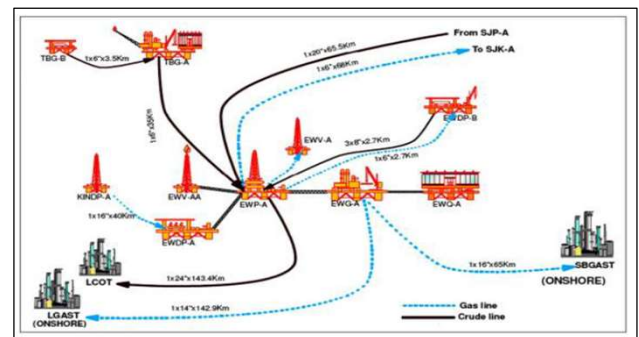


TMBG-B



2011 reprocessed 3D seismic area

3D seismic line across Tembungo field



Cross section Tembungo field

MDT pressure data and multiple fluid contacts at different reservoirs suggest faults are sealing

WELL INVENTORY

Platform	Well	String	Status
TBG-A	18	18	4 active, 9 idle, 4 SWAP, 1 abandoned
TBG-B	9	15	8 active, 6 idle, 1 SWAP

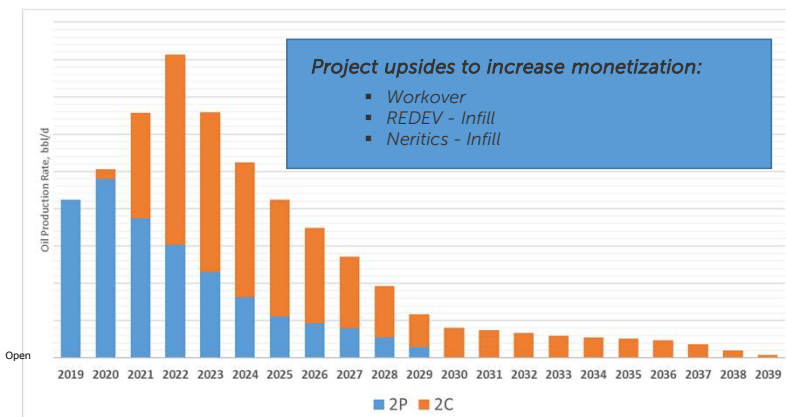
FACILITIES DESCRIPTION

Platforms		TBG-A	TBG-B
General Data	Date Installed	1 April 1974	15 Sept 1993
	Water Depth	233 ft	282 ft
Structure Data	Number of legs	8	4
	Number of Equipment decks	2	2
	Total structural weight (MT)	5380	2582
Wellhead Facilities	Number of wells	18	9
	Completion Type	Single	Single, Dual
Craneage	Quantity	1	1
	Type	Pedestal	Jib
	Capacity (MT)	20	1.5
Helideck	Approach	Clear	None
Topside Design Capacity	Max Oil (bopd)	20,000	6,000
	Max water (bpd)	1,500	
	Max Gas (MMscfd)	16	5.4
	Gas lift rate (MMscfd)	6	
Living Quarters		60 bunk	Unmanned
Drilling	Compliance to operate under SIPROD	TAS/JU	JU
Design Life	Topside (years)	25	25
	Structure (years)	30	30

OPPORTUNITIES

Project upsides to increase monetization:

- Workover
- REDEV - Infill
- Neritics - Infill



Open

■ 2P ■ 2C